

# AUTOLIFT - STORE-C



## Technical data sheet

- ✓ TÜV certified
- ✓ CE certified
- ✓ Without driver onboard
- ✓ Space saving
- ✓ Manual emergency lowering

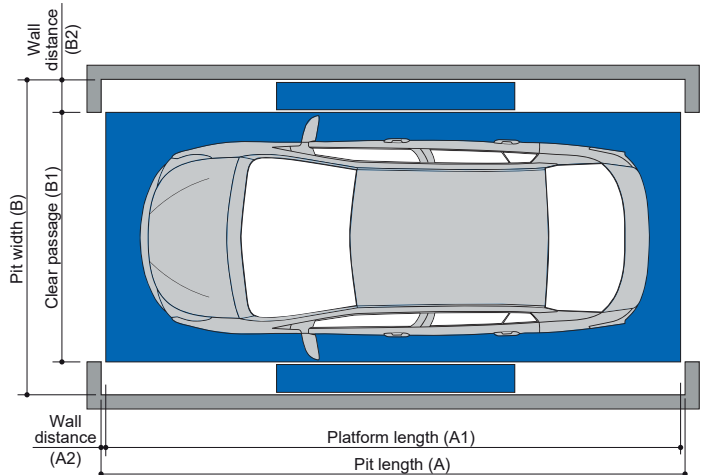
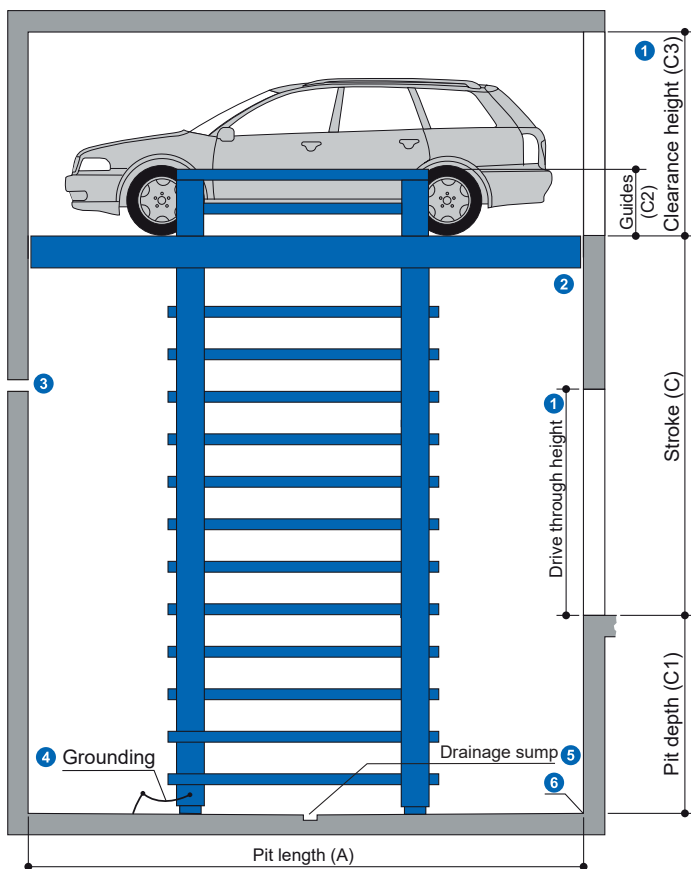
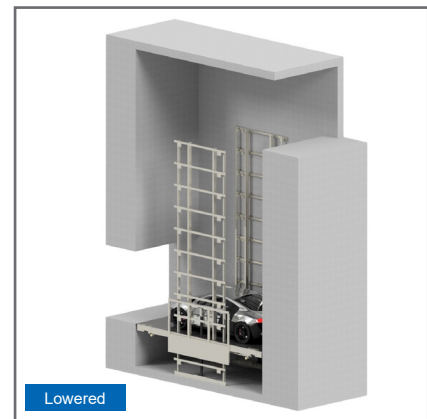
# STORE-C

## Car lift

### Specification

- Stroke = up to 11500 mm
- Platform length = up to 6000 mm
- Platform width = up to 3500 mm
- Lifting capacity = up to 3000 kg
- Estimated speed = 7 to 10 cm/sec

### Model without driver on board



Parameter		Standard (mm)	Max (mm)
Pit length	A	5360	6000
Platform length	A1	5310	5950
Wall distance	A2	25	
Pit width	B	3000	3500
Clear passage	B1	2500	3000
Wall distance	B2	250	

Parameter		Standard (mm)	Max (mm)
Stroke	C	3000	11500
Pit depth	C1	300 to 1500	
Guides	C2	0 to 1200	
Clear passage	C3	to be defined	

### Notes

- Must be at least as high as the greatest car height + 5 cm.
- To comply with the minimum finished dimensions of the lift shaft, tolerances for space requirements <sup>+3</sup> according to VOB, Part C (DIN 18330 and 18331) and DIN 18202 must also be considered. Dimensions are in cm.
- Ventilation inside the lift shaft has to be provided by the customer. If the exact dimensions are required, please consult **swiss-park**.
- Grounding of the system to be connected to the central grounding on-site (to be provided by the customer).
- Drainage pit : 50 x 50 x 50 cm, install a sump pump (refer to manufacturer's dimensions). Please contact **swiss-park** before determining the location of the drainage sump.
- At the transition section between the pit floor and walls, no hollow mouldings/coves are possible. If hollow mouldings/coves are required, the systems must be designed smaller or the pits accordingly wider.

**Page 1**  
Specification,  
Variants and  
Dimensions

**Page 2**  
Lift position,  
Lift with  
garage door,  
Approach

**Page 3**  
Detail  
building  
construction,  
Load plan

**Page 4**  
Electrical  
installation

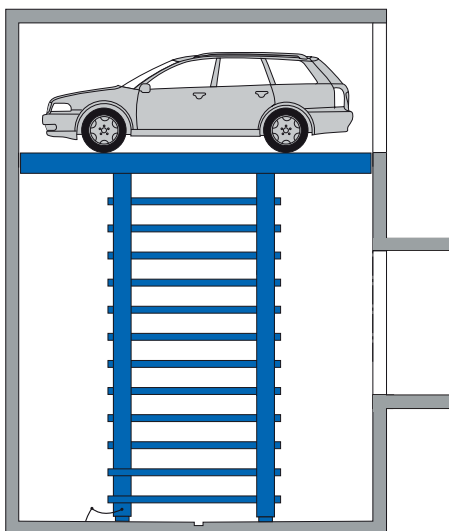
**Page 5**  
Technical  
hints

**Page 6**  
Facilities from  
customer

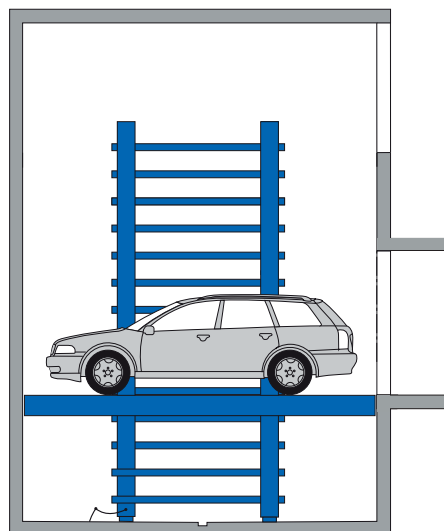
**Page 7**  
Description

## ► Lift position

System raised



System lowered



**Page 1**  
Specification,  
Variants and  
Dimensions

**Page 2**  
Lift position,  
Lift with  
garage door,  
Approach

**Page 3**  
Detail  
building  
construction,  
Load plan

**Page 4**  
Electrical  
installation

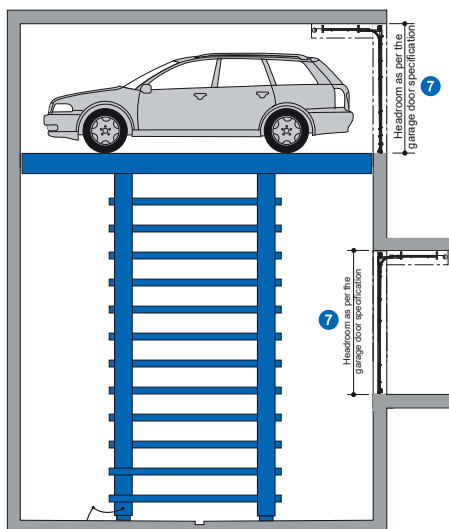
**Page 5**  
Technical  
hints

**Page 6**  
Facilities from  
customer

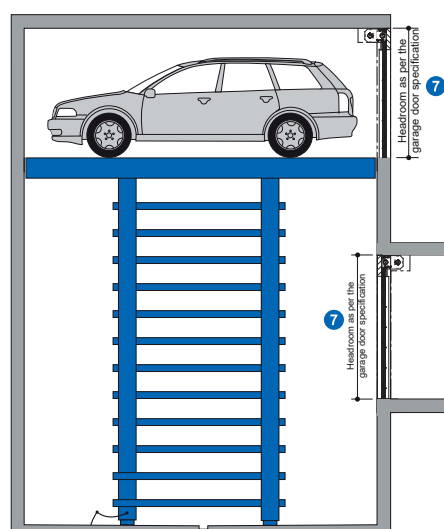
**Page 7**  
Description

## ► Lift with garage door

Sectional garage door

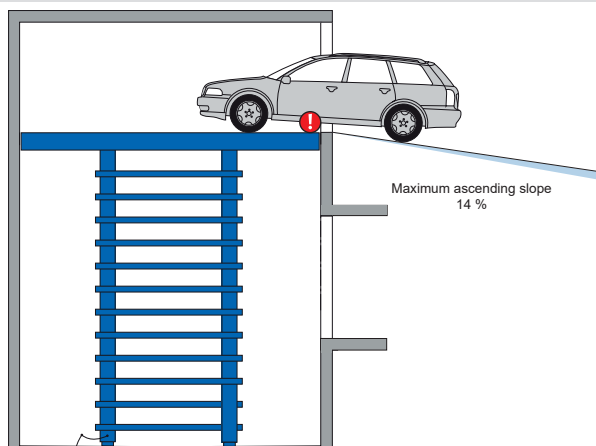
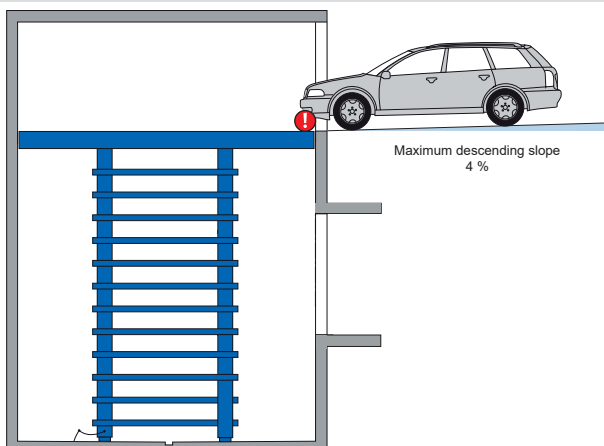


Roll-up garage door



- ⑦ Dimensions for all doors must be coordinated with the door supplier.  
Coordination between the door manufacturer and **swiss-park** is necessary.

## ► Approach

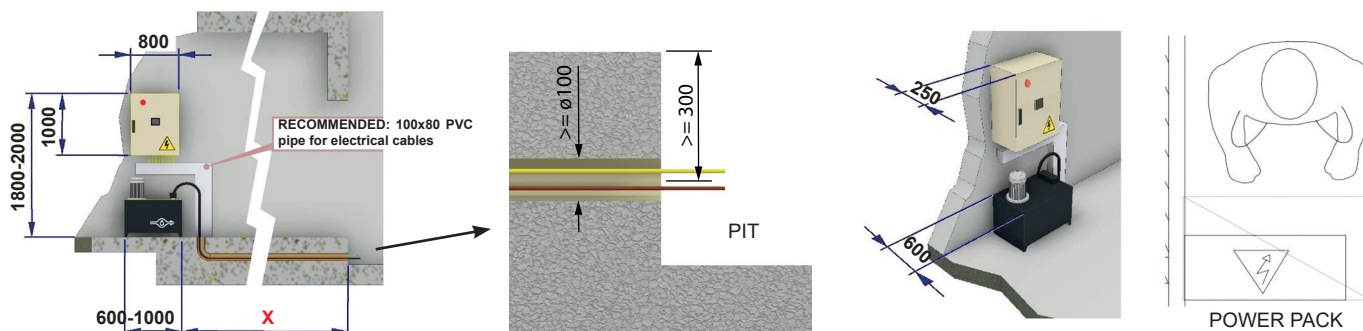


The illustrated maximum approach angles must not be exceeded.

Incorrect approach angles will cause serious maneuvering and positioning problems on the parking system for which the company **swiss-park** accepts no responsibility.

## ► Detail building construction – Hydraulic & Electric unit

The room where to place the hydraulic unit and the electric control panel will be positioned must be chosen carefully and must be easily accessible from the outside. It is recommended that this room be closed with its own door with a key.

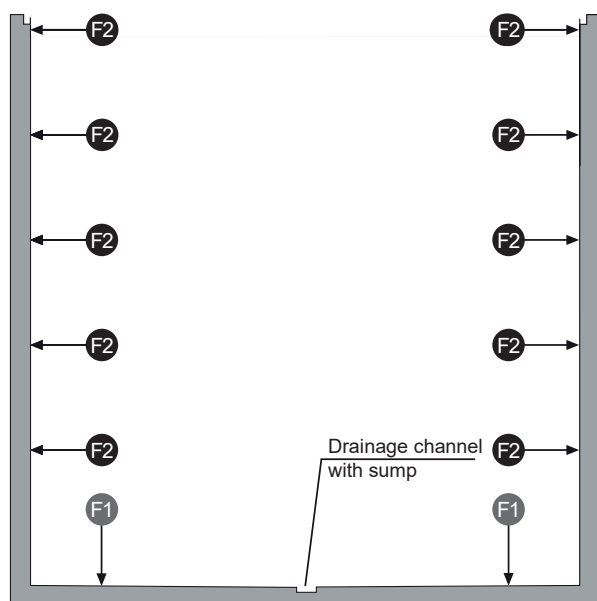


- The shaft pit and machine room must be painted with oil-resistant paint.
- The room chosen must have adequate ventilation to allow the electric motor to dissipate the heat produced during operation (< 50°C).
- Arrange plastic ducts as indicated for containing all the electrical cables coming from the pit compartment, push-button panels, doors etc.
- The pit must be connected to the electrical panel with 2 separate pipes with a minimum diameter of 100 mm to allow the passage of electric cables and hydraulic hoses. Avoid 90° bends in the pipes.
- When positioning the electrical panel and the hydraulic power unit, consider the measures indicated and provide sufficient space in front of it to ensure easy maintenance.

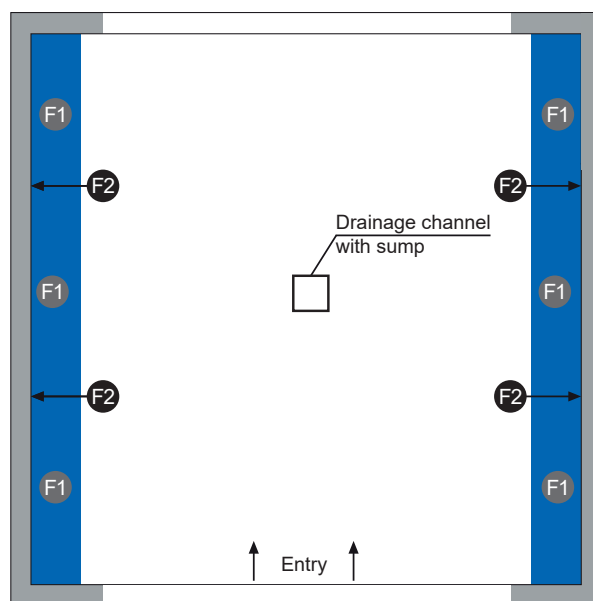
## ► Load plan

- The car lift are anchored into the side walls and ground. The drill hole depth on the floor is approx. 15 cm, and on the walls approx. 12 cm.
- Floor and walls below the drive-in level must be made of concrete (concrete quality min. C20/25)!
- The dimensions of the load-bearing points are approximate. If the exact dimensions are required, please consult **swiss-park**.

Section view



Top view



Force (kN)	
F1	F2
+35	-2

**Page 1**  
Specification,  
Variants and  
Dimensions

**Page 2**  
Lift position,  
Lift with  
garage door,  
Approach

**Page 3**  
Detail  
building  
construction,  
Load plan

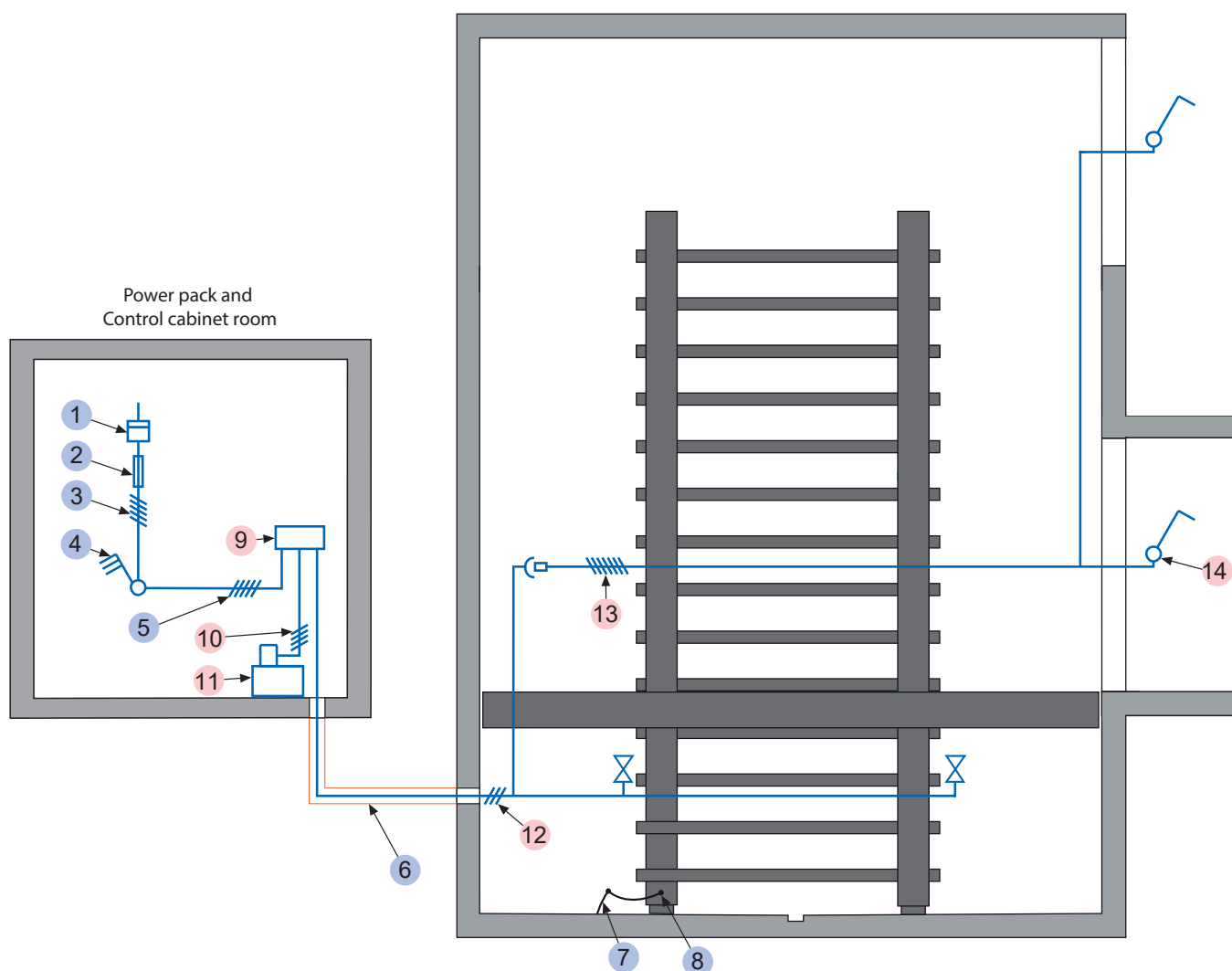
**Page 4**  
Electrical  
installation

**Page 5**  
Technical  
hints

**Page 6**  
Facilities from  
customer

**Page 7**  
Description

► Electrical installation



**Electrical data** to be performed by the customer

No.	Qty.	Description	Postion
1	1	Electricity meter	in the supply line
2	1	Main fuse : 3 x fuse 32 A (slow) or circuit breaker 3 x 32 A (trigger characteristic K, G or C) (Current - 14.5 A, <b>Starting current - 18.8 A</b> )	in the supply line
3	1	Supply line 5 x 6 mm <sup>2</sup> (3 PH + N + PE) with marked wire and protective conductor	to main switch
4	1	Lockable main switch	defined at the plan check
5	1	Supply line 5 x 6 mm <sup>2</sup> (3 PH + N + PE) with marked wire and protective conductor	from main switch to unit
6	2	Min. ø100 pipes	from power pack and control cabinet to pit floor
7	every 10 m	Foundation earth connector	corner of pit floor
8	1	Potential equalization from foundation grounding connection system according to DIN EN 60204	

**Electrical data** included in delivery of **swiss-park**

No.	Designation
9	Junction box unit
10	Supply line 5 x 6 mm <sup>2</sup> (3 PH + N + PE) with marked wire and protective conductor
11	Hydraulic unit - 7.5 kW, three phase current, 400 V, 50 Hz
12	Control line 5 x 2.5 mm <sup>2</sup> with marked wire and protective conductor
13	Control line 5 x 2.5 mm <sup>2</sup> with marked wire and protective conductor
14	Operating device

**Page 1**  
Specification,  
Variants and  
Dimensions

**Page 2**  
Lift position,  
Lift with  
garage door,  
Approach

**Page 3**  
Detail  
building  
construction,  
Load plan

**Page 4**  
Electrical  
installation

**Page 5**  
Technical  
hints

**Page 6**  
Facilities from  
customer

**Page 7**  
Description

## ► Technical hint

### Usage area

The system is suitable for indoor installation and to lift cars without a driver on board. The car lift is suitable for residential as well as office buildings. Feel free to contact **swiss-park** for consultation.

### Units

Low-noise hydraulic units are installed. We also recommend separating the garage body from the residential building. The hydraulic unit and the electrical components must be housed in a cabinet (see “**Detail building construction – Hydraulic & Electric unit**”, page 3).

### CE certification

The systems offered correspond to the EC Machinery Directive 2006/42/CE.

### Building application documents

According to the EC Machinery Directive 2006/42/CE, the **swiss-park** systems are subject to approval. Please observe the local rules and regulations.

### Available documents

- Maintenance offer / contract
- Declaration of conformity

### Environmental conditions

Ambient conditions for the areas around car lift systems:

- Temperature range -10 °C to +40 °C
- Relative humidity of 50% at a maximum outside temperature of +40 °C.

The lifting and lowering of the car lift are calculated at an ambient temperature of +10 °C and with the hydraulic system positioned immediately adjacent to the car lift. The operating time of car lift increases at lower ambient temperatures or with longer hydraulic lines.

### Care & Protection

To avoid corrosion damage, please follow separate cleaning and care instructions (as per the “**Corrosion protection**” sheet) and ensure that your garage is well ventilated.

### Noise protection

#### Standard noise protection:

As per DIN 4109-1 (Sound insulation in buildings – Part 1: Minimum requirements) - Section 9:

- Maximum noise level in living and sleeping areas 30 dB (A).

Noise created by users are not considered.

The following dimensions are required for adherence to this value:

- Noise protection package in accordance with quote/order (**swiss-park**).
- Noise insulation dimension of the building structure of minimum weighted sound reduction index, min.  $R'w = 57$  dB (service to be provided by the customer)

#### Increased noise protection (special agreement):

As per DIN 4109-5 (Sound insulation in buildings - Part 5: Increased requirements) - Section 8:

- Maximum noise pressure level in living and sleeping areas 25 dB (A).

Noise created by users are not considered.

The following dimensions are required for adherence to this value:

- Noise protection package in accordance with quote/order (**swiss-park**).
- Noise insulation dimension of the building structure of min.  $R'w = 62$  dB (service to be provided by the customer)

**HINT** : User noises are the noises that can be influenced by individual users of our **swiss-park** systems. These are created during the accessing of the platform, slamming of vehicle doors, engine, and brake noise.

**Page 1**  
Specification,  
Variants and  
Dimensions

**Page 2**  
Lift position,  
Lift with  
garage door,  
Approach

**Page 3**  
Detail  
building  
construction,  
Load plan

**Page 4**  
Electrical  
installation

**Page 5**  
Technical  
hints

**Page 6**  
Facilities from  
customer

**Page 7**  
Description

## ► Facilities to be provided by the customer

### Safety barriers

During the car lift construction, in accordance with DIN EN ISO 13857, safety barriers are to be placed immediately in front of, adjacent to, or behind the systems where there are roadways.

### Building services

Any lighting, ventilation, fire extinguishing and fire alarm systems, as well as clarification and compliance with the relevant regulatory requirements.

### Ventilation

To ensure a continuous exchange of air, to reduce air humidity, prevent condensation and reduce vehicle moisture (from rain, snow, etc.), we recommend that the customer provide a ventilation system in conjunction with a specialist. This will help to minimise the risk of corrosion and resulting faults.

### Lighting

The customer must observe local regulations pertaining to the illumination of parking spaces and roadways. In accordance with DIN EN 12464-1 'Light and lighting - Lighting of work places', an illumination level of min. 200 lx is recommended for the parking spaces and operating area of the system.

### Drainage

A pump or drain sewerage is to be installed in the drainage sump (50 x 50 x 20 cm) inside the pit to avoid stagnant water (Component defect due to stagnant water will no longer be covered under warranty). For reasons of environmental protection, we recommend painting the pit floor, and to provide oil and petrol separators in the connections to the public sewage network.

### Electrical supply to the main switch / Foundation earth connector

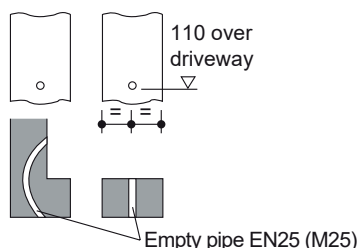
The customer must lay the supply cable to the master switch during assembly. Functional capability can be checked by our engineers on-site, in conjunction with the electrical engineer. If this is not possible during assembly for reasons attributable to the customer, the customer must commission an electrical engineer.

The customer must earth the steel structure with a foundation earth connection (earthing distance max. 10 m) and equipotential bonding in accordance with DIN EN 60204 (see "Electrical installation", page 4)

### Control panel

Empty conduits and recesses for the operating element (see "Electrical installation", page 4). Consultation with **swiss-park** is required when using folding doors.

#### Control panel on plaster



### Accessibility

If installation by **swiss-park**, Free accessibility of the pit with a crane or truck for lowering the lift. For completion, the lift must be accessible by car.

### Other services on-site

- Preparation of the lift shaft
- Measures for the implementation of water protection regulations
- Measures to comply with fire protection regulations and noise protection in accordance with DIN4109
- Telephone line (PSTN) with connection to the control cabinet for emergency call activation
- Gates to the shaft end. Attention: 230 Volt (single phase) and potential free contact required
- Pit measurement
- Daily update on project photos, if required.
- Foundation grounding if necessary
- All permits and approvals

### If the following are not included in the quotation, they will also have to be provided/paid by the customer:

- Mounting of contactor and terminal box to the wall valve, complete wiring of all elements in accordance with the circuit diagram
- Costs for final technical approval by an authorized body
- Main switch
- Control line from main switch to hydraulic unit
- Railing

**Page 1**  
Specification,  
Variants and  
Dimensions

**Page 2**  
Lift position,  
Lift with  
garage door,  
Approach

**Page 3**  
Detail  
building  
construction,  
Load plan

**Page 4**  
Electrical  
installation

**Page 5**  
Technical  
hints

**Page 6**  
Facilities from  
customer

**Page 7**  
Description

## ► Description - Car lift without driver on board

### General description

- **swiss-park** car lifts are for lifting cars without a driver on board.
- Dimensions according to the underlying pit, width and height dimensions.
- Passenger car positioning on car lift by means of positioning sensors on both sides (to be set in accordance with the operating instructions).
- Operation via a control element with Dead man's switch.
- Fixing the control element usually in front of the entrance or on the way revealing the outside.
- Operating instructions at every operating point.
- For car lifts with an entrance door, special dimensions must be respected.

### swiss-park system consisting of:

- 2 Side pillars or guide
- 2 / 4 Hydraulic cylinders
- 1 Platform
- 4 / 8 Nylon guide rollers
- Dowels, screws, fasteners, connecting elements etc.

### Platform consisting of:

- Checker plates
- Crossbeams
- Lateral beams
- Brackets
- Screws, nuts, etc.

### Hydraulics consisting of:

- Hydraulic cylinders
- Solenoid valve
- Safety valves
- Hydraulic lines
- Hydraulic fittings
- High-pressure hoses
- Mounting material

### Electrical system consisting of:

- 2 Operating elements (Emergency-stop, lock, access via RFID)
- Junction box unit
- Control cabinet

### Hydraulic unit consisting of:

- Hydraulic oil tank
- Oil filling
- Internal gear pump
- Pump holder
- Coupling
- Three-phase motor (7.5 kW, 400 V, 50 Hz, low noise)
- Pressure gauge
- Pressure relief valve
- Hydraulic hoses (to reduce noise transmission to the hydraulic pipes)

### We reserve the right to change these specifications without notice!

**swiss-park** reserves the right, in the course of technical and technological progress, to use newer or different technologies, systems, processes, procedures, or standards than those originally offered and ensure that the customer does not incur any disadvantage.

**Page 1**  
Specification,  
Variants and  
Dimensions

**Page 2**  
Lift position,  
Lift with  
garage door,  
Approach

**Page 3**  
Detail  
building  
construction,  
Load plan

**Page 4**  
Electrical  
installation

**Page 5**  
Technical  
hints

**Page 6**  
Facilities from  
customer

**Page 7**  
Description





**Swiss-Park GmbH**

Falkenweg 8, D-88213 Ravensburg

Tel: +49 (0)751-999 23 740

E-mail : [info@swiss-park.com](mailto:info@swiss-park.com)

Website : [www.swiss-park.com](http://www.swiss-park.com)