

---

## Swiss-Park Parkingsystems

We Create Parking Solutions





## Swiss-Park Company

### Customer first!

#### **Happy customers are what drive us.**

As a medium-sized, family-run company in the field of parking solutions, our corporate culture focuses on the customer.

Where parking space is scarce, we provide the best parking solutions for our customers and implement construction projects without worries. For almost every parking problem, we have developed products that enable convenient parking solutions.

Our products can be found in single-family houses, apartments, industrial facilities, and commercial & office buildings. The product portfolio ranges from double parkers to car lifts, turntables and parking platforms to completely automated parking systems. As a global company, we have established our manufacturing facilities at various locations. Please feel free to visit one of our projects with us!





## **Fair & Transparent**

We aim to communicate transparently and fairly with our customers at all points of time to identify and solve any problem together.

## **Sustainable**

Sustainability is not just an empty phrase for us. We are working hard to minimise our CO<sub>2</sub> footprint. We are optimistic to become CO<sub>2</sub> neutral in the near future.

## **Values**

Our goal as a global family-run company is to create and preserve values. We are constantly creating new facilities through innovation and in addition, we also provide solutions for renovating the existing facilities.

Swiss Park GmbH - continuously better!

## **Our systems**

We solve parking problems!

### **Stack parking**

Simple parking

### **Automatic parking systems**

Automatic parking

### **Car lifts**

Underground parking

### **Turntables**

Solution for turning bottlenecks

### **Service**

You can rely on





## Our Parkingsystems

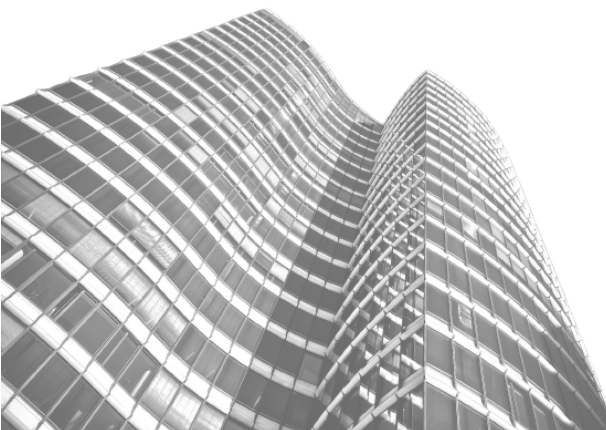
### **Your parking problem - our challenge!**

By intelligently mobilising parked cars, we eliminate parking space problems.

The variety of our products creates solutions almost everywhere - from skyscrapers to single-family homes.

### **Product categories**

- **Stack Parker**
- **Automatic Parking Systems**
- **Car Lifts**
- **Turn Tables**







## Stack Parker



### **Simply parking! Increase parking space with stack parkers.**

A stack parker is the perfect solution for parking space shortages. Our flexible, mechanical parking systems have several parking levels. They are therefore well suited for underground garages, as well as single-family homes and apartment buildings.

Depending on the model, there is space for two to six cars on the double parker. With a parking space load of 2000kg to 3000kg, almost any car can be parked comfortably on it.

### **Dependent Parking**

Dependent parking operates without a pit. Therefore, the lower parking space must be empty to access the upper car.

#### **Models:**

- **V1**
- **V2**

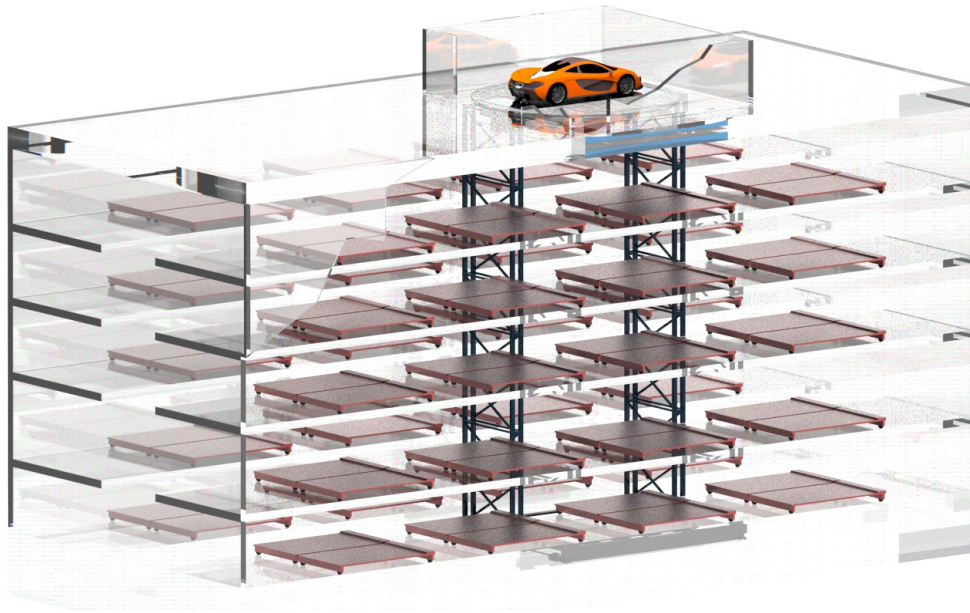
### **Independent parking**

Independent parking operates with a pit. Therefore, any car parked in the parking system can be accessed independently.

#### **Models:**

- **S1.6**
- **S1.8**
- **S2.2**
- **S2.8**
- **S3**





## Automatic parking systems



### **Automatic parking! Smart parking for large buildings.**

Our parking systems park cars vertically and horizontally with the help of robots.

This is how we maximise parking space inside large buildings. Cars are parked automatically, safely and theft-protected. Our automatic parking system puts an end to the endless search for parking spaces in conurbations! This saves time, money and reduces CO<sub>2</sub> emissions!

### **Semi-automatic parking systems**

Our MAX series semi-automatic car parking systems can accommodate up to three vehicles on top of each other.

#### **Models:**

- **MAX1**
- **MAX2**
- **MAX3**
- **MAX2M**

### **Fully automatic parking systems**

The car is parked by the driver on a platform which stows it fully automatically in a high-bay storage system.

#### **Models:**

- **T-Type**

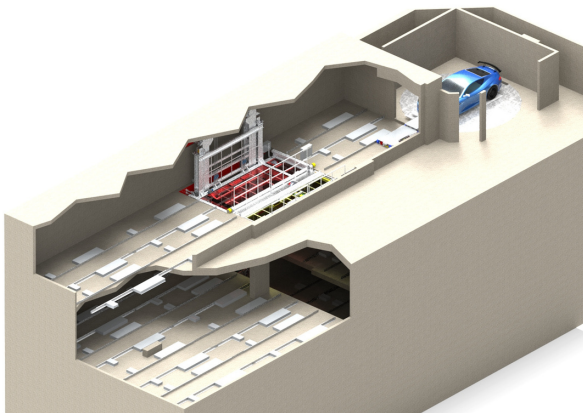




## Park automatically and safely!

A large proportion of accidents and property damage occur during the parking process.

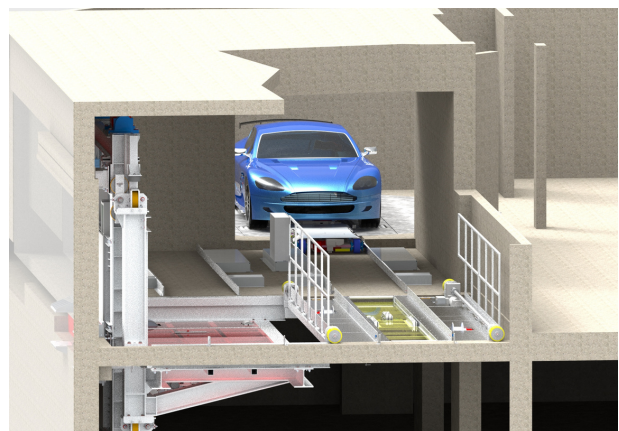
With our systems, cars can be parked safely and accident-free! The car is stored theft-proof in the system.



## Optimise parking space!

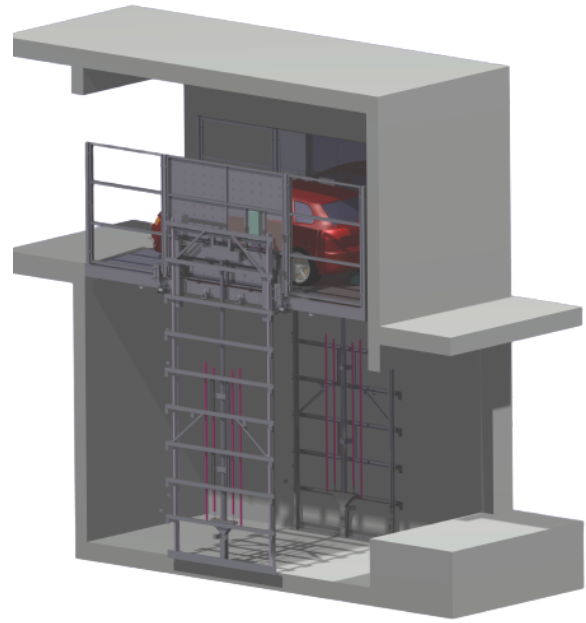
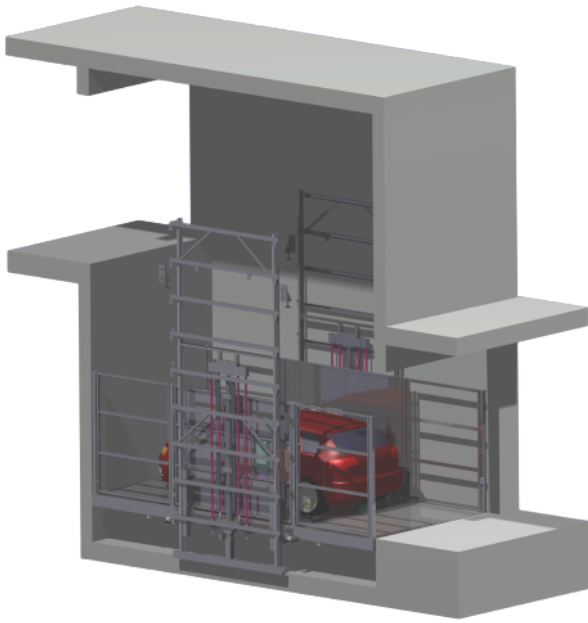
By precisely measuring all the cars that are parked in our systems, we can optimise the parking space used.

Cars are transported to the optimal parking space via robot technology.



You can find a video about our automatic parking system here:





## Car lifts



### Underground parking!

Are you looking for a way to move your car to different levels in a space-saving and comfortable way? Then our car lifts are the right product for you.

Whether as access to the underground car park or for easy storage of the car: our car lifts have been designed to deliver maximum parking comfort and benefit to the user.

### With driver on Board

Our models with driver on board move car and driver over several levels.

#### Models:

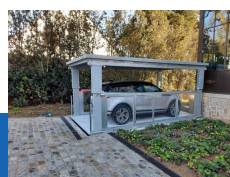
- **RISE-P**
- **RISE-C**
- **RISE-R-C**
- **RISE-R-5-P**

### Without driver on Board

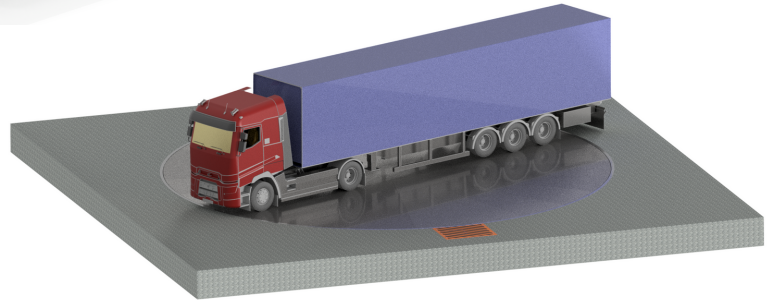
Our models without driver on board are designed for parking cars on different levels!

#### Models:

- **STORE-P**
- **STORE-C**
- **STORE-R-C**
- **STORE-R-3-P/ STORE-R-5-P**
- **STORE-DOUBLE**







## Turntables



### Solutions for turning bottlenecks!

In the case of limited turning spaces, our Swiss-Park turntables are the perfect parking aids. If there are no or hardly any turning possibilities in your garage, you can solve this problem easily and conveniently with one of our turntables.

This makes eternal manoeuvring and reverse parking a thing of the past.

### Car Turntable

The TT 4.5 turntable simplifies manoeuvring and turning of cars in garages in confined spaces.

**Models:**

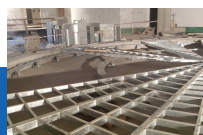
- **TT-4.5**

### Truck Turntable

The TT15 turntable facilitates the loading and unloading of trucks in confined spaces.

**Models:**

- **TT-15**





## Service



### You can rely on!

To guarantee the safety of the users, we recommend maintenance and cleaning of the parking systems at regular intervals.

Our service team is at your side with help and advice! Whether it's a simple repair, concrete renovation or cleaning: we know our stuff!

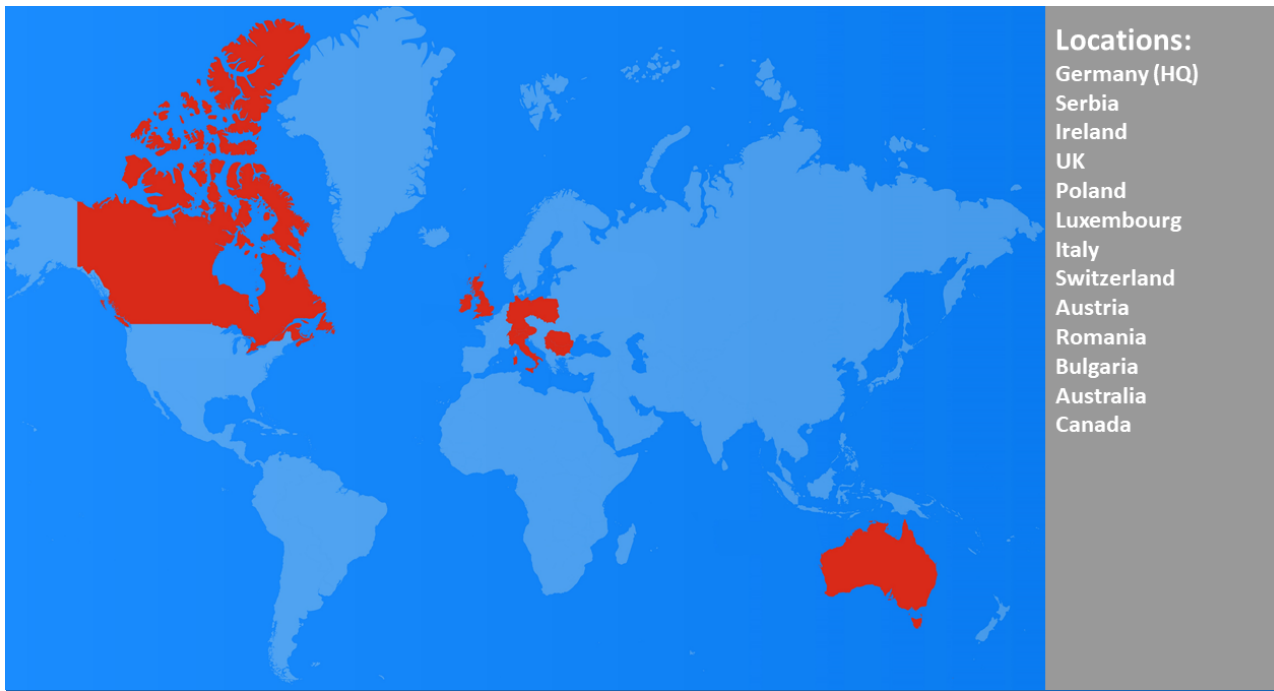
### Contact us for:

- **Refurbishments**
- **Repairs**
- **Cleaning**
- **Maintenance**

Through regular maintenance and inspection of the parking systems, we guarantee their safety and increase their longevity!







## Active worldwide



### **We set standards worldwide in the field of parking systems!**

Our customer-oriented corporate culture is bearing fruit: within just a few years, we were able to establish subsidiaries worldwide and expand our activities.

Whether double parkers, automatic parking systems, car lifts or turntables: our systems are used by thousands of people every day. The reliability of our systems pays off for us and our customers.

Contact us!  
We will be happy to advise you!

### **Contact**

#### **Swiss-Park GmbH**

info@swiss-park.com  
www.swiss-park.com  
0751 27088725

### **Headquarters**

Falkenweg 8, 88213 Ravensburg

